

Product Information

FOAMEND® Series : Powdered Antifoam (CP-600D)

1. Introduction

CP-600D has an excellent antifoam effect in **powder laundry detergents** generated during the washing process. This product is easy to incorporate into powder laundry detergent.

2. Product List

Product Name	Composition(a)	Appearance(b)	Active Contents	Ionic Activity(c)	Specific Gravity	pH(d) [25℃]	Suitable Diluent(d)
CP-600D	SO	WGP	-	WA/A	0.85 ± 0.10	10 ± 1/A	Water

(a) SO = Silicone Oil Complex (b) WGP = White Granule Powder (c) WA/A = Weak Anionic / 1% Aqua-Solution (d) /A = / 1% Aqua-Solution

3. Product Description

FOAMEND® CP-600D

FOAMEND® CP-600D is an antifoam for laundry detergent

Features :

- Excellent compatibility with the surfactant
- Free-flowing, non-caking granules, easy to incorporate by dry-blending
- Effective release of the active ingredient take place even at low temperature
- Good stability of high temperature & alkaline solution
- Stable and effective over wide range of pH and washing temperature
- Particle size : 0.250~1.180mm(16~60mesh)
- Mean Particle size : 0.600mm

Application :

- In-wash foam-control for laundry powder detergents

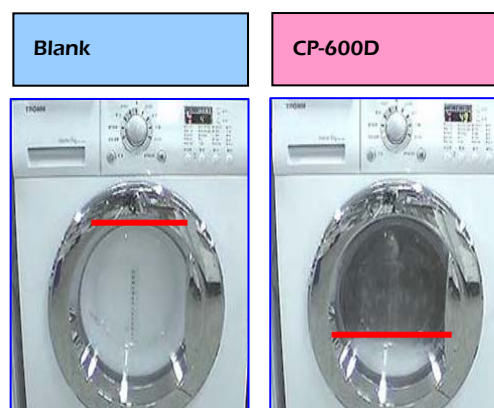
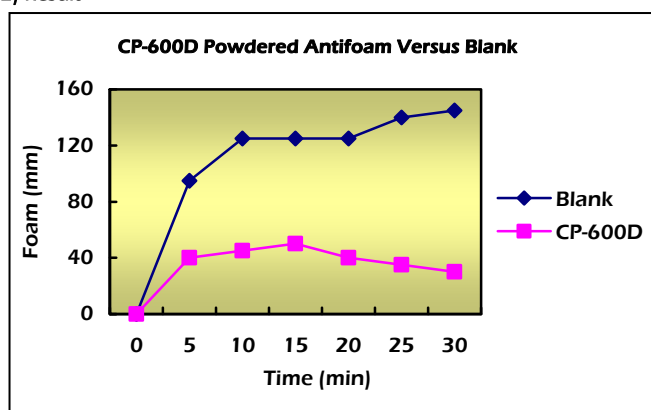
4. Antifoaming test for laundry detergent

4.1 Test for laundry washing machine

1) Condition

- Machine type : LG TROMM WD-L900C
- Test time : 60 min(Washing cycle)
- Water hardness : 60 ppm CaCO₃
- Temperature : 60℃
- Various home-made detergent powders

2) Result



4.2 Test for laundry detergent

1) Test method

Step 1) 1 gram of detergent and 1% powdered antifoam.

Step 2) Put in a glass vessel and then 100ml tap is added in water.

Step 3) Heated up and stirrer in order to solve the solid parts in water.

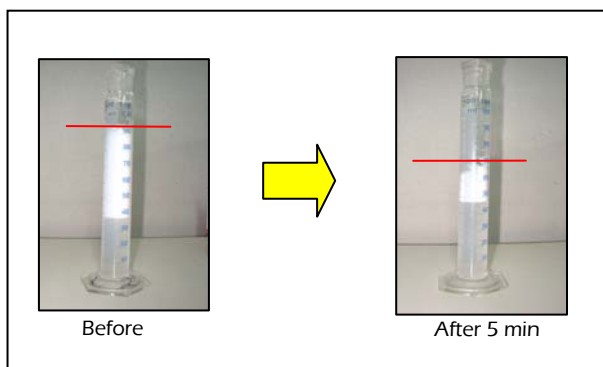
Step 4) The solution is put in a big vessel and the tap water is added into to the solution up to 500ml.

Step 5) 50ml of solution is put in a long vessel and after cooling to room temperature.

Step 6) Shaked for 50 times in 30 seconds strongly, then the lid is opened and waited for 5 min and foam level check.

2) Result

Additive in CP – 600D : 3.5 cm decrease



5. Additional Information

Company

Cheongsan Chemical co., ltd

Contact

Website : <http://www.cs-chem.co.kr/en>

Email : master@cs-chem.co.kr

Tel : (82) 2 512 0583

Fax : (82) 2 512 0584

Sales Office : Byucksan Digital Vally II 501, 481-10 Gasan-Dong, Geumcheon-Gu, Seoul, Korea

Stoage

This product is should be stored in a cool dry place.

Store away from direct sunlight and high Humidity

Packing

This product is available in big bag of 300, 500kg.

Attention

Keep container tightly closing a lid after using.